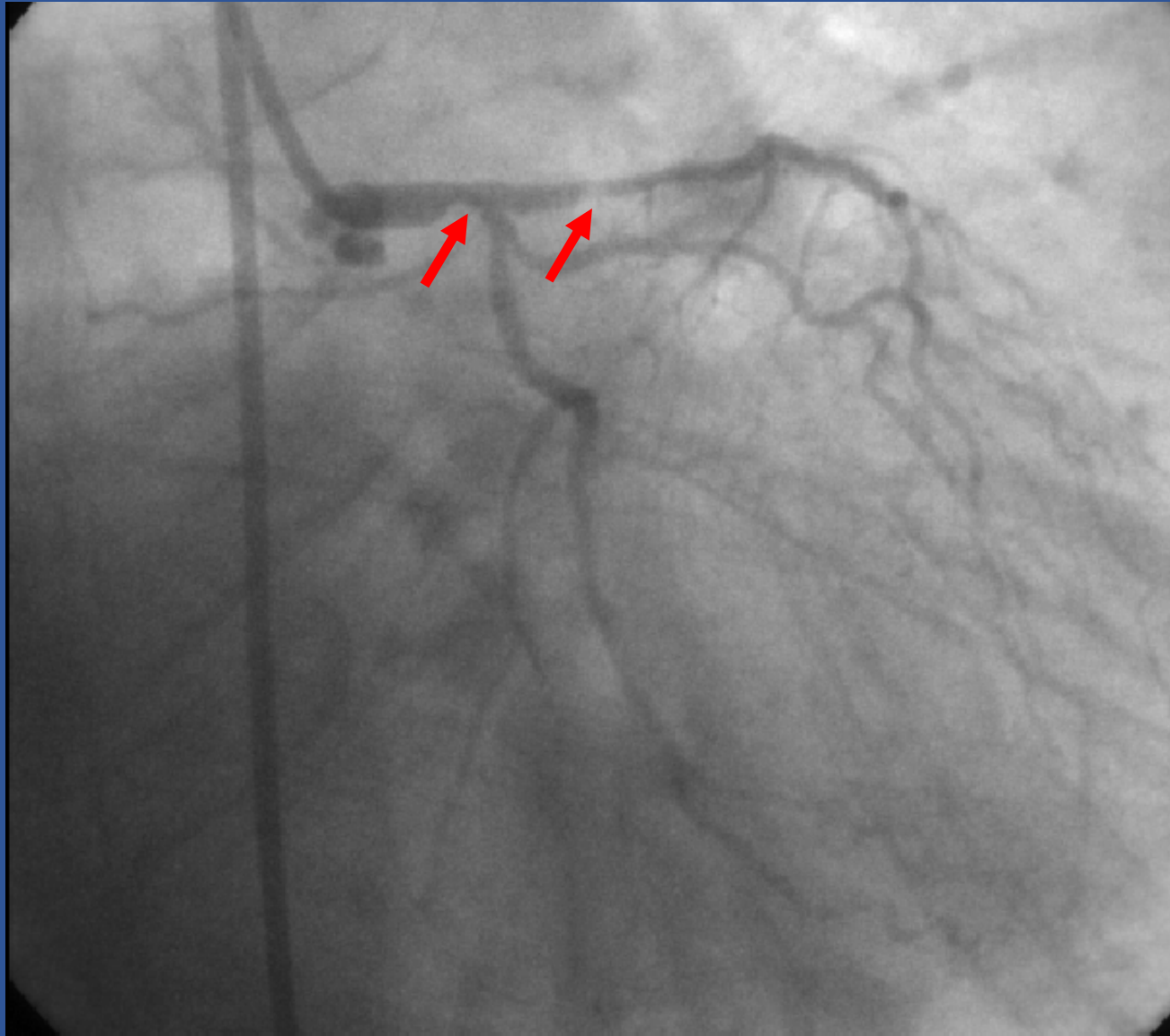


Caso clinico

- Mujer 79 años
- Múltiples FRCV (DM, HTA, Dislipemia...)
- Ingresa en otro hospital por SCASEST
- ECOTT: FEVI conservada, hipoquinesia apical.



ESTENOSIS SEVERA A NIVEL
DE TCI DISTAL Y DA PROXIMAL

OPCIONES TERAPEUTICAS

1. REVASCULARIZACION QUIRURGICA
2. ICP : REVASCULARIZACION PERCUTANEA
 - A) ESTRATEGIA SIMPLE (STENT VP+BALON RL)
 - B) DOBLE STENT (STENT VP Y RL)

EUROCORE 5,1. SINTAX SCORE 16.

ECA, n=1905.

Syntax Score ≤ 32

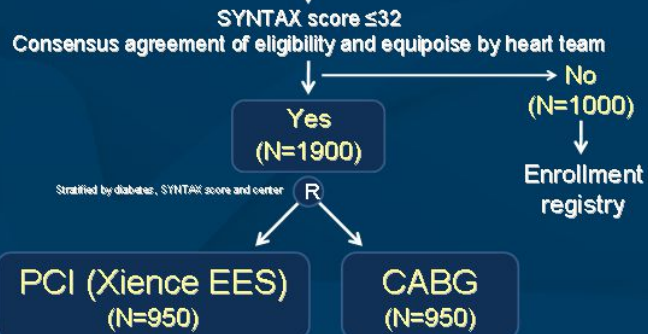
ORIGINAL ARTICLE

Objetivo 1º: Muerte global, Ictus o infarto
-3 años

Everolimus-Eluting Stents or Bypass Surgery for Left Main Coronary Artery Disease

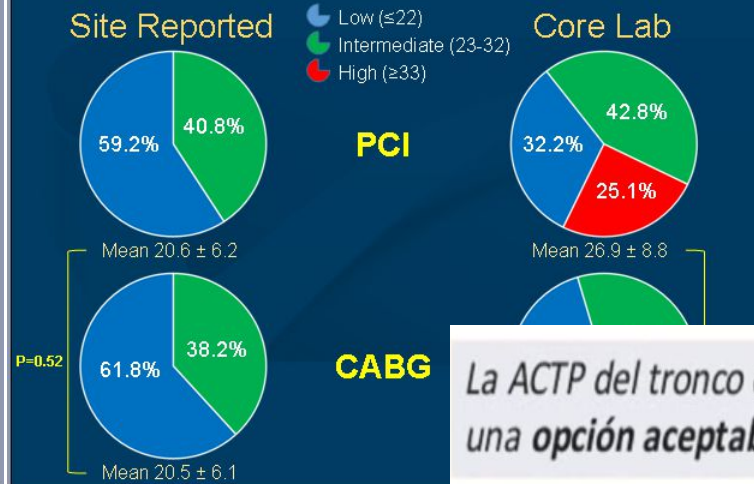
Study Design

2900 pts with unprotected left main disease



Follow-up: 1 month, 6 months, 1 year, annually through 5 years
Primary endpoint: Measured at a median 3-yr FU, minimum 2-yr FU

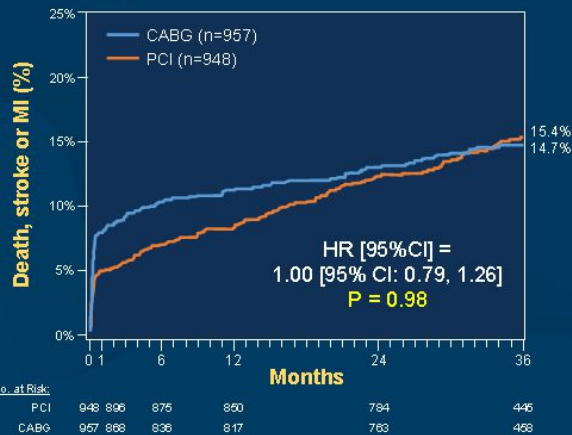
SYNTAX Score



La ACTP del tronco debe de dejar de ser una alternativa a la cirugía y pasar a ser una opción aceptable y planteable de forma electiva a muchos pacientes.

Primary Endpoint

Death, Stroke or MI at 3 Years



3-Year Death, Stroke or MI

Subgroup	PCI (N=948)	CABG (N=957)	HR [95% CI]	Favors PCI	Favors CABG	P (Int)
All patients	15.4%	14.7%	1.00 [0.79, 1.26]			
Left ventricular ejection fraction						
- ≥50%	14.7%	14.4%	0.98 [0.75, 1.27]			0.99
- <50%	20.4%	18.2%	0.98 [0.52, 1.83]			
Non-LM diseased coronary arteries						
- 0	14.6%	14.4%	0.99 [0.54, 1.79]			
- 1	12.3%	16.0%	0.72 [0.46, 1.12]			0.78
- 2	18.8%	12.7%	1.44 [0.96, 2.21]			
- 3	15.2%	16.8%	0.87 [0.50, 1.48]			
LM bifurcation or trifurcation stenosis ≥50%						
- Yes	15.6%	15.3%	0.98 [0.75, 1.27]			0.82
- No	14.8%	12.9%	1.05 [0.59, 1.87]			
Syntax score (site reported)						
- ≤22	14.3%	14.4%	0.95 [0.70, 1.31]			0.70
- 23 - 32	17.0%	15.4%	1.05 [0.73, 1.51]			
Syntax score (core lab assessment)						
- ≤22	10.3%	13.3%	0.71 [0.44, 1.13]			0.49
- 23 - 32	17.6%	16.5%	1.02 [0.71, 1.47]			
- ≥33	16.9%	14.3%	1.15 [0.71, 1.87]			

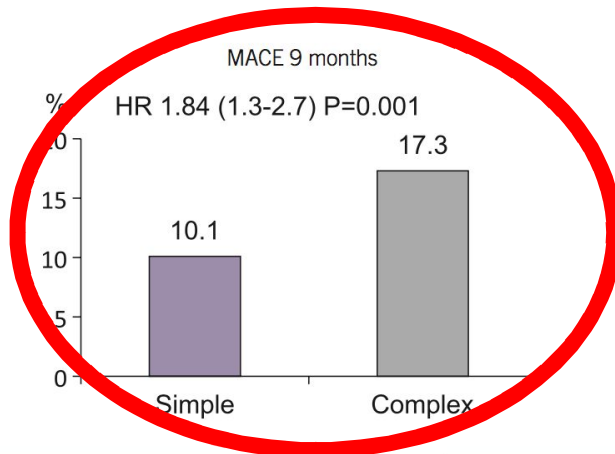
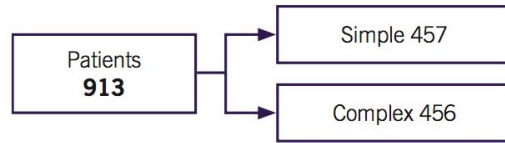
Bifurcation stenting: simple vs complex

Objective: to evaluate the clinical outcome of simple provisional T-stenting vs complex (culotte, crush and T-stenting) strategy of bifurcation DES stenting

Study: pooled-analysis, randomised trials

Population: patients from NORDIC I and BBC ONE

Endpoints: MACE: all cause death, MI and TVR at 9 months

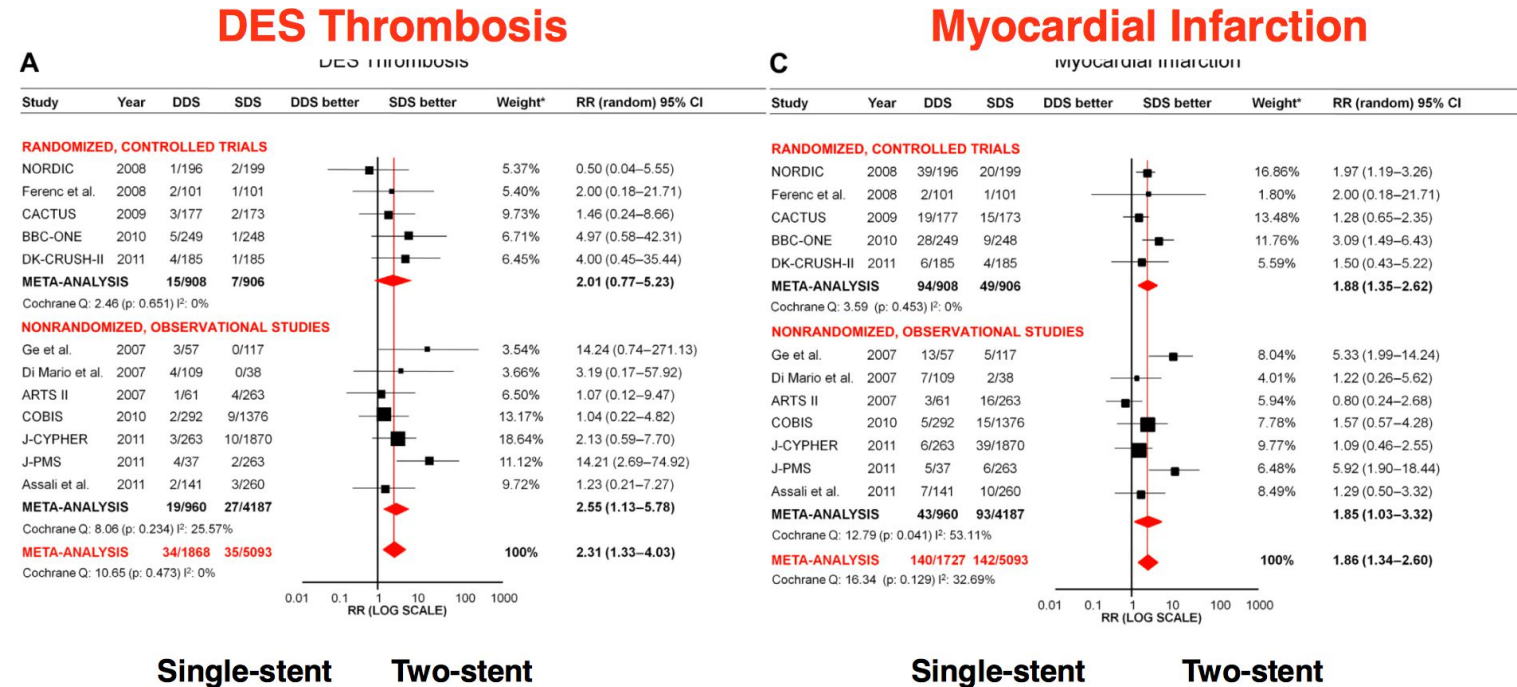


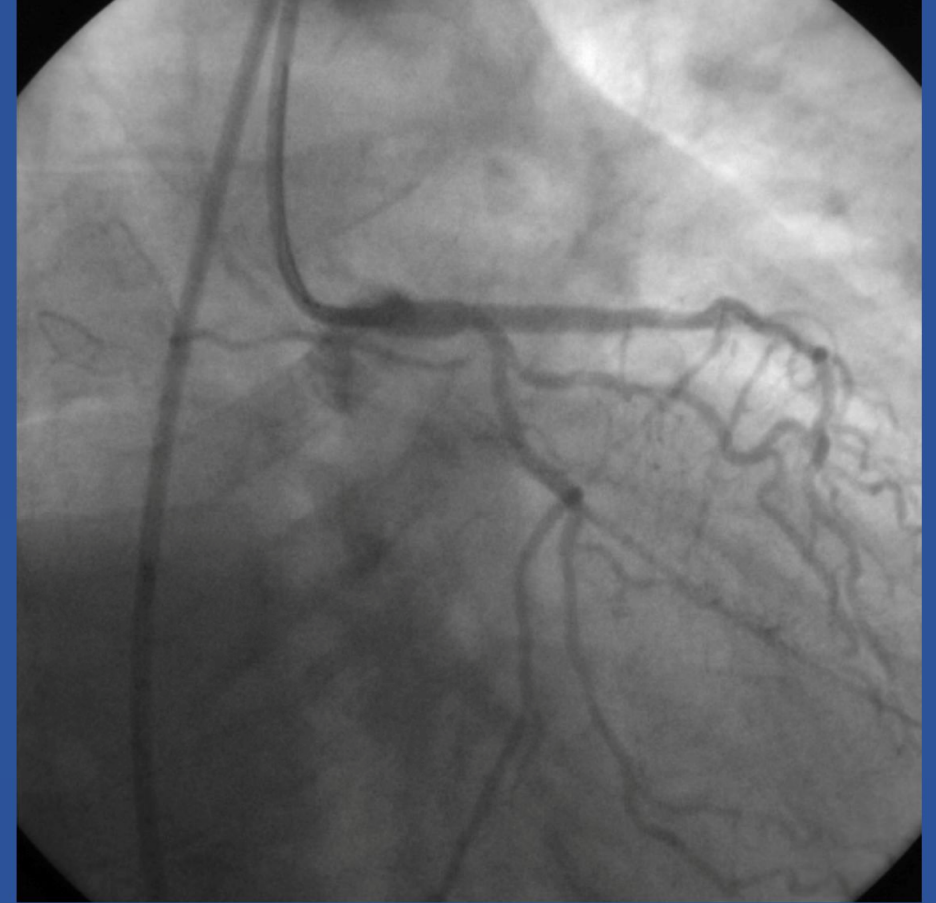
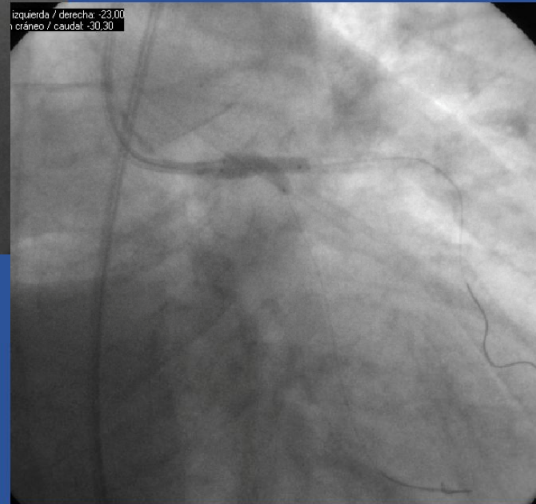
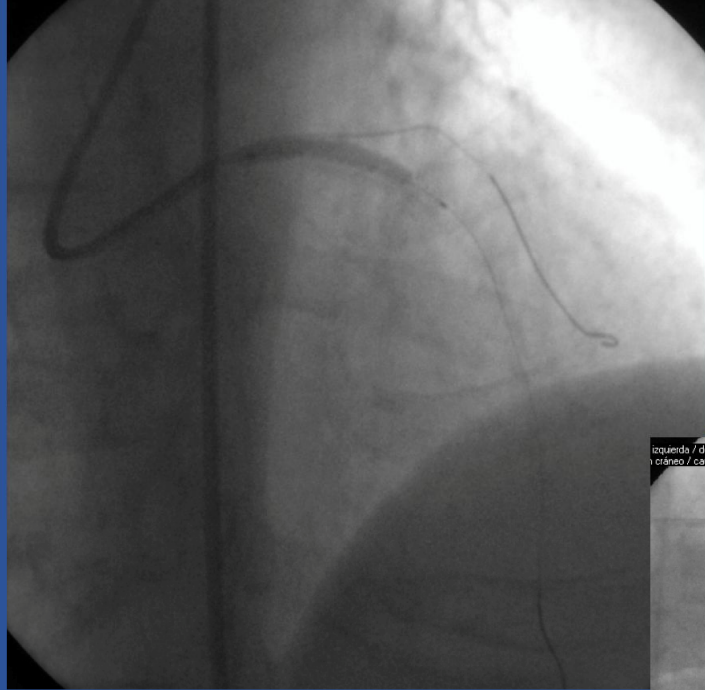
True bifurcations (n = 657)	simple	complex
MACE %	9.2	17.3

Conclusion: a provisional single-stent approach is superior to dual stenting approach for percutaneous treatment of bifurcation lesions

Behan et al. *Circ Cardiovasc Interv* 2011;4:57-64

Meta-Analysis of 12 Major Studies, 6961 Patients (5 RCTs and 7 observational studies) *Provisional Single-Stenting is Better*

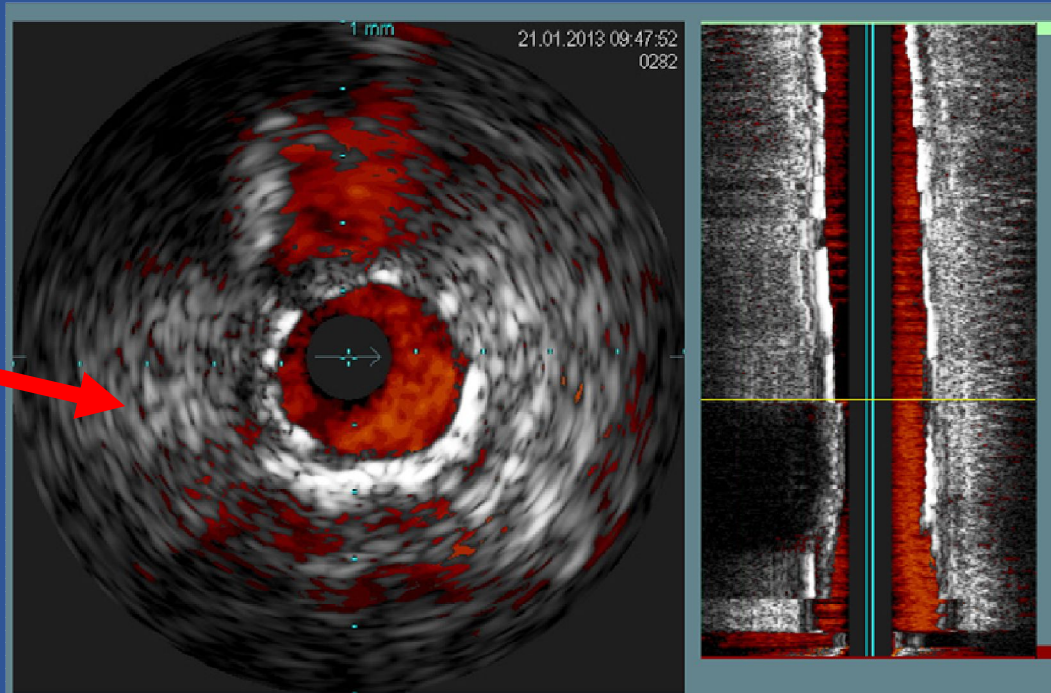
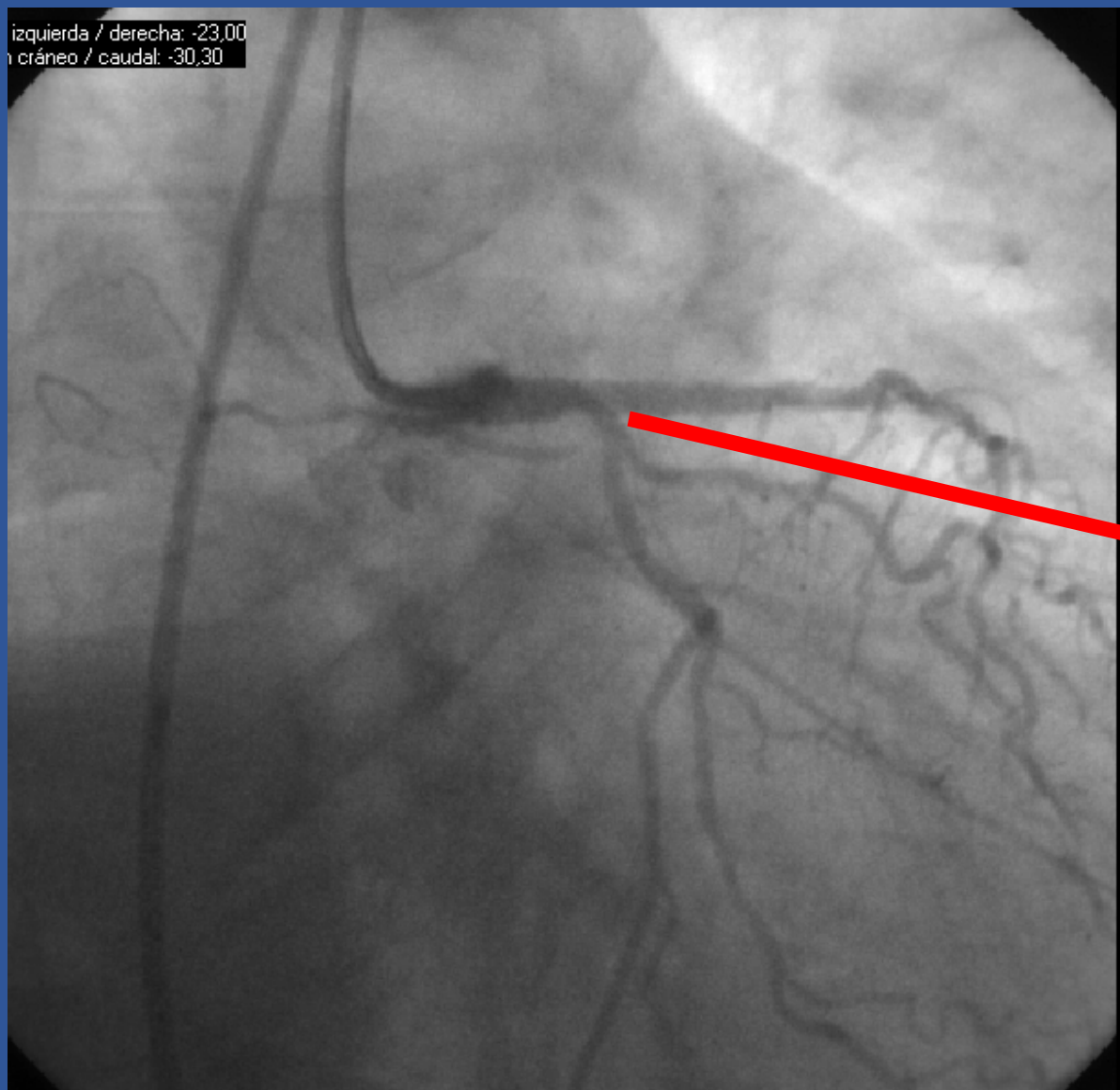




STENT ORSIRO 2,75X26 mm EN TCI DISTAL + KISSING BALON
(balones 3x15 y 2,5x15 mm)
En DA proximal Stent orsiro 2,5x15 mm



izquierda / derecha: -23,00
cráneo / caudal: -30,30



EVOLUCION

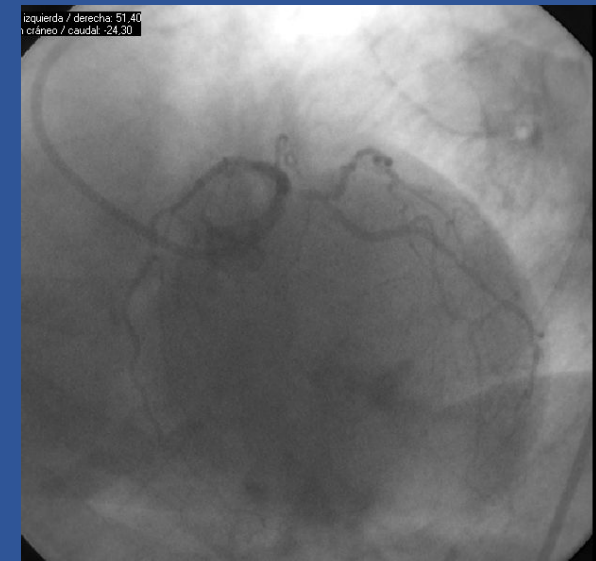
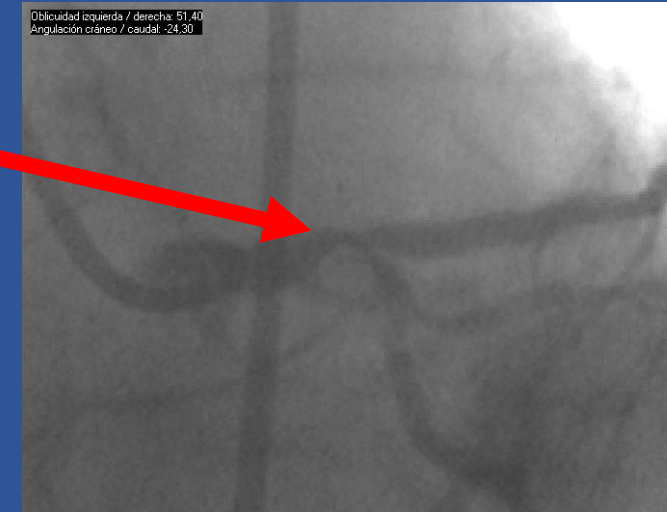
- REINGRESA A LOS 9 MESES POR ANGOR INESTABLE
- SE REMITE PARA NUEVO CATETERISMO

REESTENOSIS SEVERA TCI DISTAL Y ORIGEN CX. ¿ Y AHORA QUE?

1. REVASCULARIZACION QUIRURGICA

2. STENT RL (CULOTTE, T-STENTING...)

3. BALÓN FARMACOACTIVO



DEB in Bifurcation lesions

- World Wide Registry (13 %, no specific report so far)
 - Small Vessel Registry (23 %, no specific report so far)
 - PEPCAD V (MB stenting SB provisional stenting)
 - Debut Study (MB stenting SB provisional stenting, Paclitaxel without matrix/excipient)
 - Babilon (randomized DCB/BMS vs DES)
 - Sgueglia 2011 (MB stenting, kissings DCBs)
 - Herrador 2013 (MB DES SB DCB & provisional stenting)
 - Kenneth Chin 2013 (DES MB, DCB SB)
 - Biolux-I (DES MB, DCB SB)
 - **Australian report 2013, mainly ISR**
 - **Registry on DCB vs. Snd gen. DES for bifurcation**
 - **Schulz 2013 (DEB only)**
 - **PEPCAD BIF (randomized DEB only)**
- Wöhrle Jacc 2012;60:1733
Zeymer Eurointervention 2013
Stella Cath Cardiovasc Interv 2012
Mathey Eurointervention 2011
Herrador J Interv Card 2013;26:454
Sgueglia Card Rev Med 2011;12:280
Chin TCT 2013
Worthley TCT 2013
Jepsen DIT March 2013
Naganuma Eurointervention 2016
Schulz/Klebe Clin Res Cardiol 2014
Babilon Eurointervention 2014
Pepcad Bif Kleber Clin Res Cardio2016

Modified from F. Kleber, EBC meeting

